

2x Beetle Lysis-Juice (1 02 516)

Components included:

| | |
|------------------------------|---|
| Beetle Lysis-Juice 2x | 100ml Dual concentrated buffer for Screening with firefly luciferase, without substrate. Store at +4°C |
| D-Luciferin | 1 vial (A)→ for 100 ml Beetle Lysis-Juice 2x p. a. free acid, firefly (synth.). Store at -20°C |
| ATP | 1 vial (B)→for 100 ml Beetle Lysis-Juice 2x Adenosintriphosphat, Store at +4°C |

Reconstruction:

Beside the black buffer-bottle the kit is equipped with two further tubes which are labelled with **A** D-Luciferine and **B** ATP. D-Luciferine and ATP are white powders which have to be dissolved and mixed into the buffer by shaking gently. Afterwards the finished measuring buffer can be aliquoted and long-term stored at -80°C.

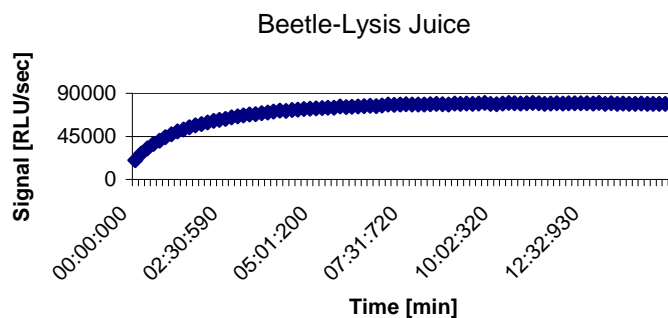
Note: Do not combine this buffer with marine luciferases because the buffer contains triton. The combination of triton with the substrate of marine luciferases (Coelenterazine) leads to autoluminescence.

Standard Protocol

Program Luminometer:

For the measuring we suggest measurement duration of 5 sec. and a delay of 2 sec. for each sample.

- 1.) Add **Beetle Lysis-Juice 2x** to the vial in ratio 1:1 of your cells in medium (Example: 100µl cells in medium add 100µl Beetle Lysis-Juice 2x).
- 2.) To make sure the lysis was completed please mix the dissolved cells 3 times in the pipette tip.
- 3.) After that incubate the solution at least for 5 min. (up to 20 min. possible).
- 4.) Measurement starts after 2 sec. delay for 5 sec. duration.



2x Beetle Lysis-Juice (1 02 516)

Components included:

| | |
|------------------------------|---|
| Beetle Lysis-Juice 2x | 100ml Dual concentrated buffer for Screening with firefly luciferase, without substrate. Store at +4°C |
| D-Luciferin | 1 vial (A)→ for 100 ml Beetle Lysis-Juice 2x p. a. free acid, firefly (synth.). Store at -20°C |
| ATP | 1 vial (B)→for 100 ml Beetle Lysis-Juice 2x Adenosintriphosphat, Store at +4°C |

Reconstruction:

Beside the black buffer-bottle the kit is equipped with two further tubes which are labelled with **A** D-Luciferine and **B** ATP. D-Luciferine and ATP are white powders which have to be dissolved and mixed into the buffer by shaking gently. Afterwards the finished measuring buffer can be aliquoted and long-term stored at -80°C.

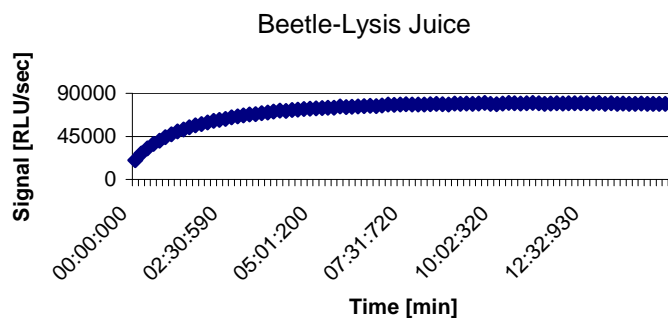
Note: Do not combine this buffer with marine luciferases because the buffer contains triton. The combination of triton with the substrate of marine luciferases (Coelenterazine) leads to autoluminescence.

Standard Protocol

Program Luminometer:

For the measuring we suggest measurement duration of 5 sec. and a delay of 2 sec. for each sample.

- 1.) Add **Beetle Lysis-Juice 2x** to the vial in ratio 1:1 of your cells in medium (Example: 100µl cells in medium add 100µl Beetle Lysis-Juice 2x).
- 2.) To make sure the lysis was completed please mix the dissolved cells 3 times in the pipette tip.
- 3.) After that incubate the solution at least for 5 min. (up to 20 min. possible).
- 4.) Measurement starts after 2 sec. delay for 5 sec. duration.

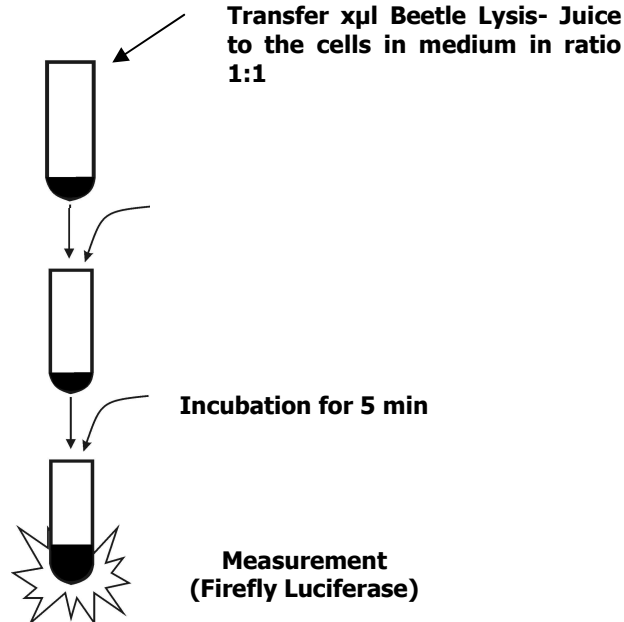


2x Beetle Lysis-Juice (1 02 516)

Standard procedure:

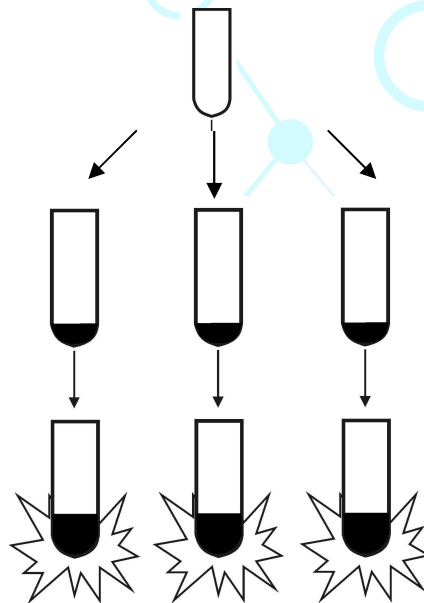
Program Luminometer

(delay 2sec./measurement duration 5sec)



Optional: parallel measurement in Duo- or Triple-Well System (Firefly/ Renilla/ Gaussia/ AP/ β -Gal)

Split the Cell Lysate and transfer to different tubes for measuring several luciferases in one sample.

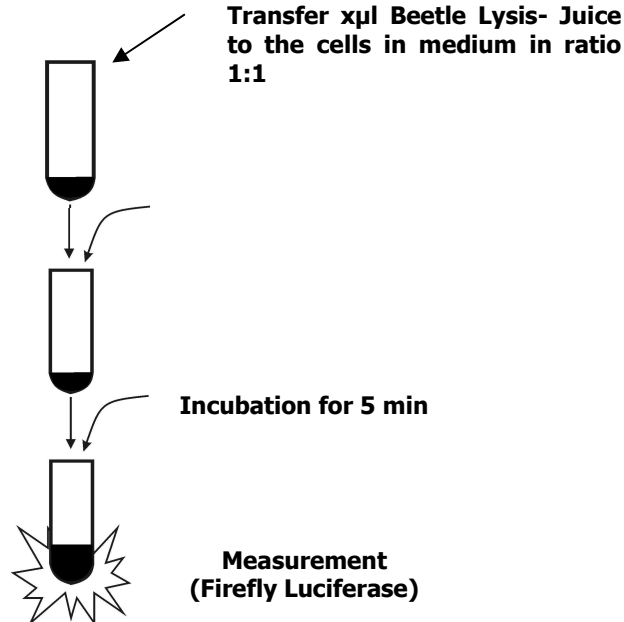


2x Beetle Lysis-Juice (1 02 516)

Standard procedure:

Program Luminometer

(delay 2sec./measurement duration 5sec)



Optional: parallel measurement in Duo- or Triple-Well System (Firefly/ Renilla/ Gaussia/ AP/ β -Gal)

Split the Cell Lysate and transfer to different tubes for measuring several luciferases in one sample.

